

An art exhibition at the aquarium

~ get a better understanding of
crustaceans' life with natural history paintings ~

○Yasuko Miyazaki, Hiroshi Arai

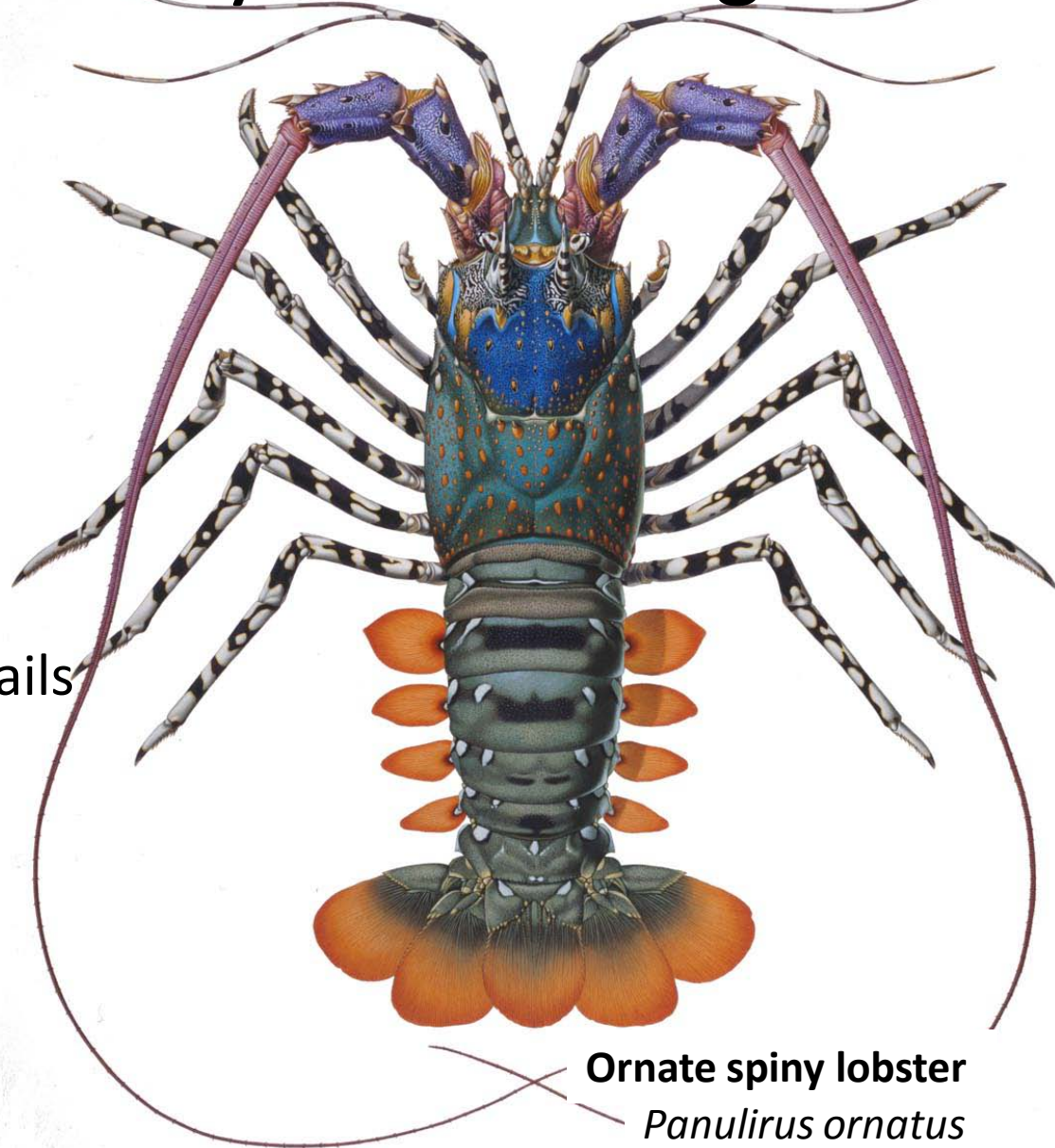
 Tokyo Sea Life Park

Crustaceans drawn by Chisato Sugiura



Chisato Sugiura(1962~2001)

- Beautifully-recreated details and colors of live form
- Three dimensional appearance



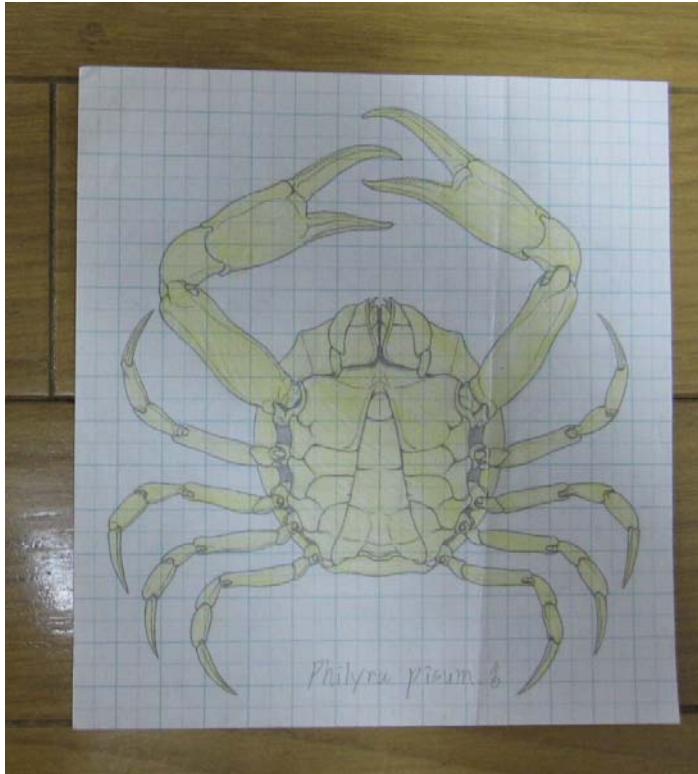
Ornate spiny lobster

Panulirus ornatus

Deepen visitor's understandings in the crustaceans' life with paintings

(The purpose of exhibiting his works at the aquarium)

- Accurately-described paintings enable to observe detailed structure (Usually, it is very difficult because ■ ■ ■).



Purse crab
Philyra pisum 5/26/09
70

Deepen visitor's understanding in the crustaceans' life with paintings

(The purpose of exhibiting his works at the aquarium)

- In aquariums, it is not easy to display their whole outlook.
- Often, visitors don't even notice their presence.



- Try to present interesting biological aspect of crustaceans with Sugiura's paintings.
- Try to exhibit his paintings not just as art works, but in aquarium's way.

杉浦千里

が描いた海の生き物

博物館に観る エビとカニの美

Living sea creatures drawn by Sugiura Chisato.
The beauty of shrimp and crab seen in natural history paintings.



2011 12/15^木 - 2012 2/28^火

- 観覧時間 午前9時30分～午後5時(入園券の発売は午後4時まで)
- 観覧料 毎週水曜日(12月28日から翌年1月1日、2月14～16日は臨時休園)
一般 700円(560円)、中学生 250円(200円)、65歳以上 350円(280円)
() 20名以上の団体、小学生以下、都内在住在学の中学生無料
- 年間パスポート 一般 2,800円、65歳以上 1,400円
- 交通案内 ● JR京葉線「葛西臨海公園」駅下車 徒歩5分
● 東京メトロ東西線「葛西」駅下車 バス「葛西臨海公園」行き
- 協力 杉浦千里の作品保存会



東京都葛西臨海水族園

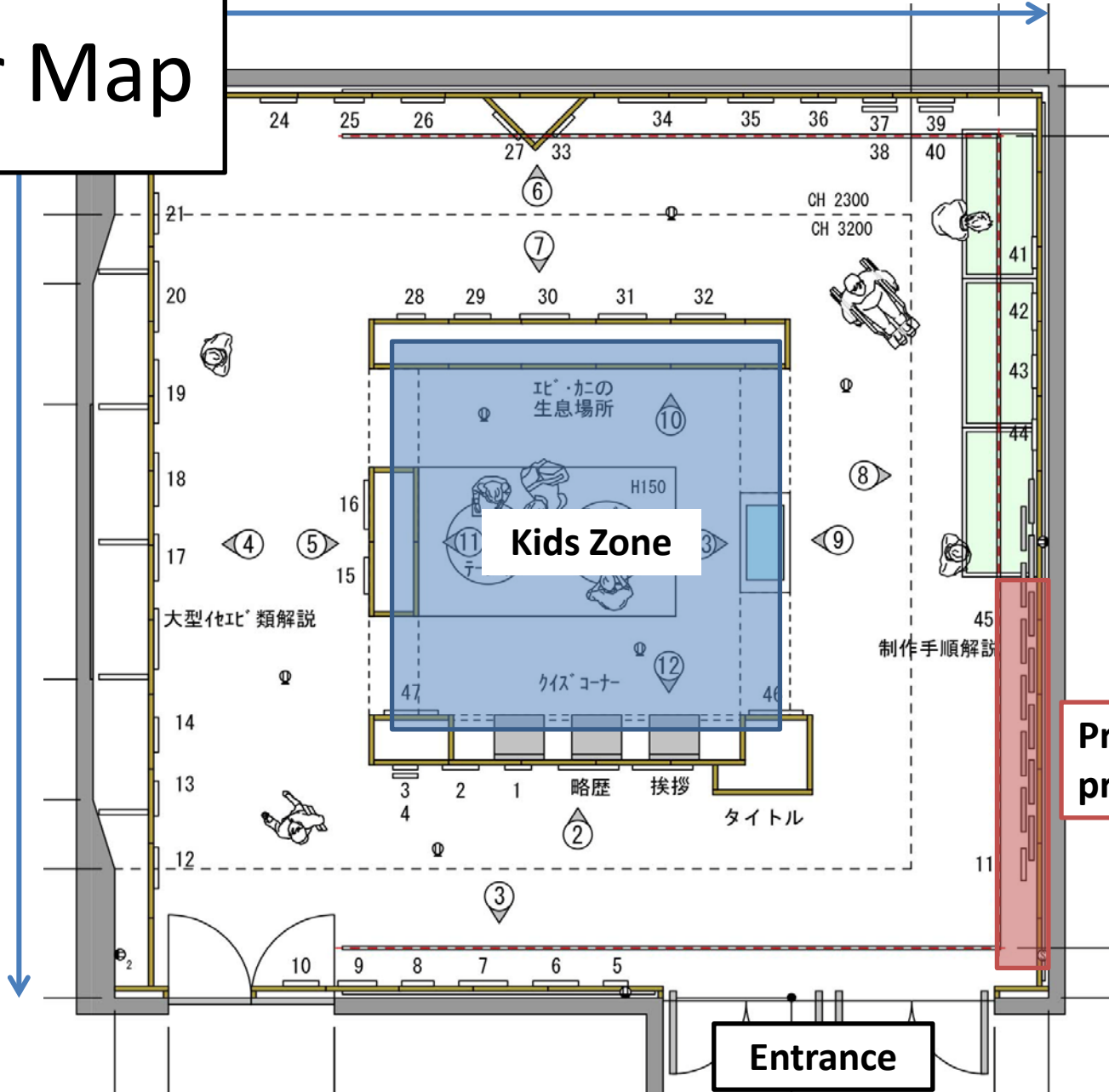
〒134-8587 東京都江戸川区臨海町6-2-3 TEL:03-3869-5152(代)

公益財団法人東京動物園協会 動物取扱業登録表示 第002150号

Floor Map

11m

11m



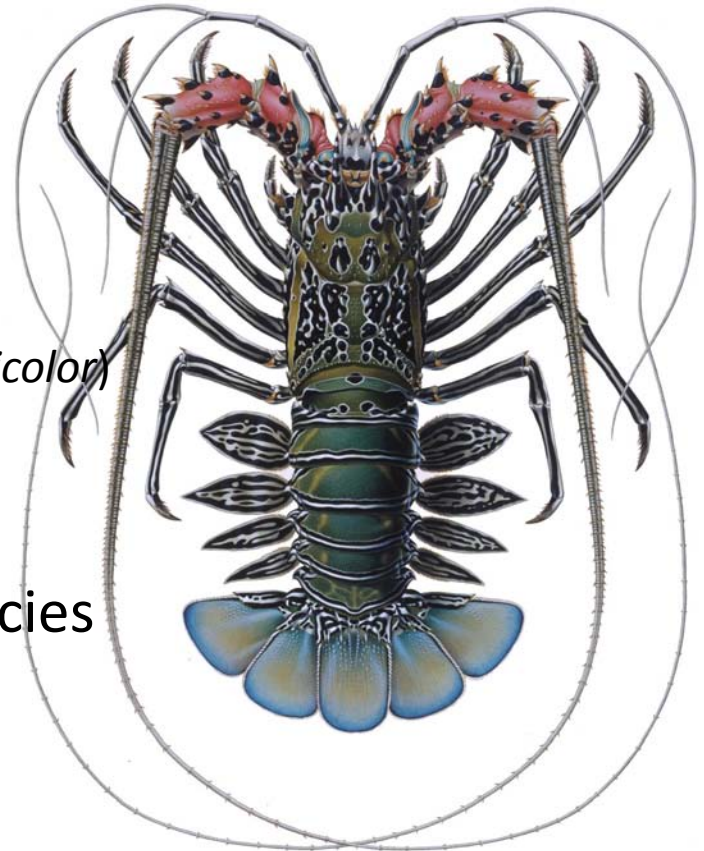
Kids Zone

Production process

Entrance

Contents of the exhibits

- Paintings of Sugiura
 - Natural history paintings: 55 paintings (crustaceans: 52, others: 3)
 - Production process : 13 panels
 - Other paintings: 2 paintings
- Live Exhibit
 - Painted spiny lobster (*Panulirus versicolor*)
- Kids zone
 - Shed shells of crustaceans: 6 species



杉浦千里
が描いた海の生き物



博物館に観る
エビとカニの美

2011.12.15 - 2012.2.28

東京都葛西臨海水族園







STYRACIS

STYRACIS is a genus of crabs in the family Styracidae. It is characterized by its large, robust body and powerful claws. The genus is named after the Greek word for 'styrax', a resinous substance.



● 圖說 — 龜山島的火山岩

龜山島的火山岩，主要是由玄武岩、安山岩、流紋岩等組成。這些岩石在島上廣泛分布，是島上地質景觀的重要組成部分。玄武岩通常呈塊狀，表面有柱狀節理；安山岩則多呈塊狀，表面有流紋；流紋岩則多呈塊狀，表面有流紋。這些岩石的分布，反映了島上火山活動的歷史和過程。

のすみか



体験

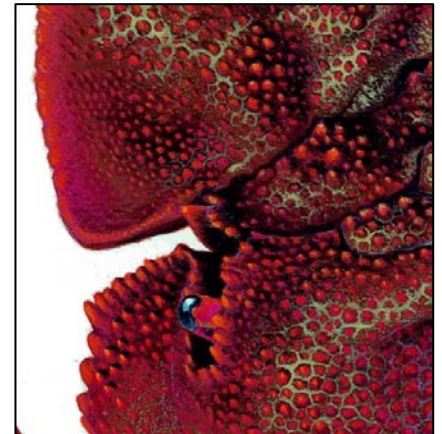
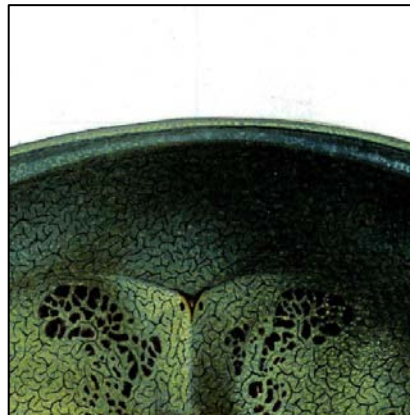
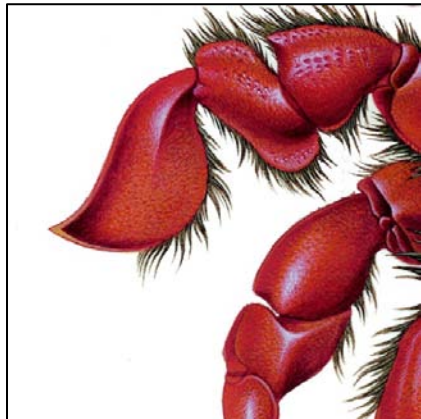
のせい
みよう

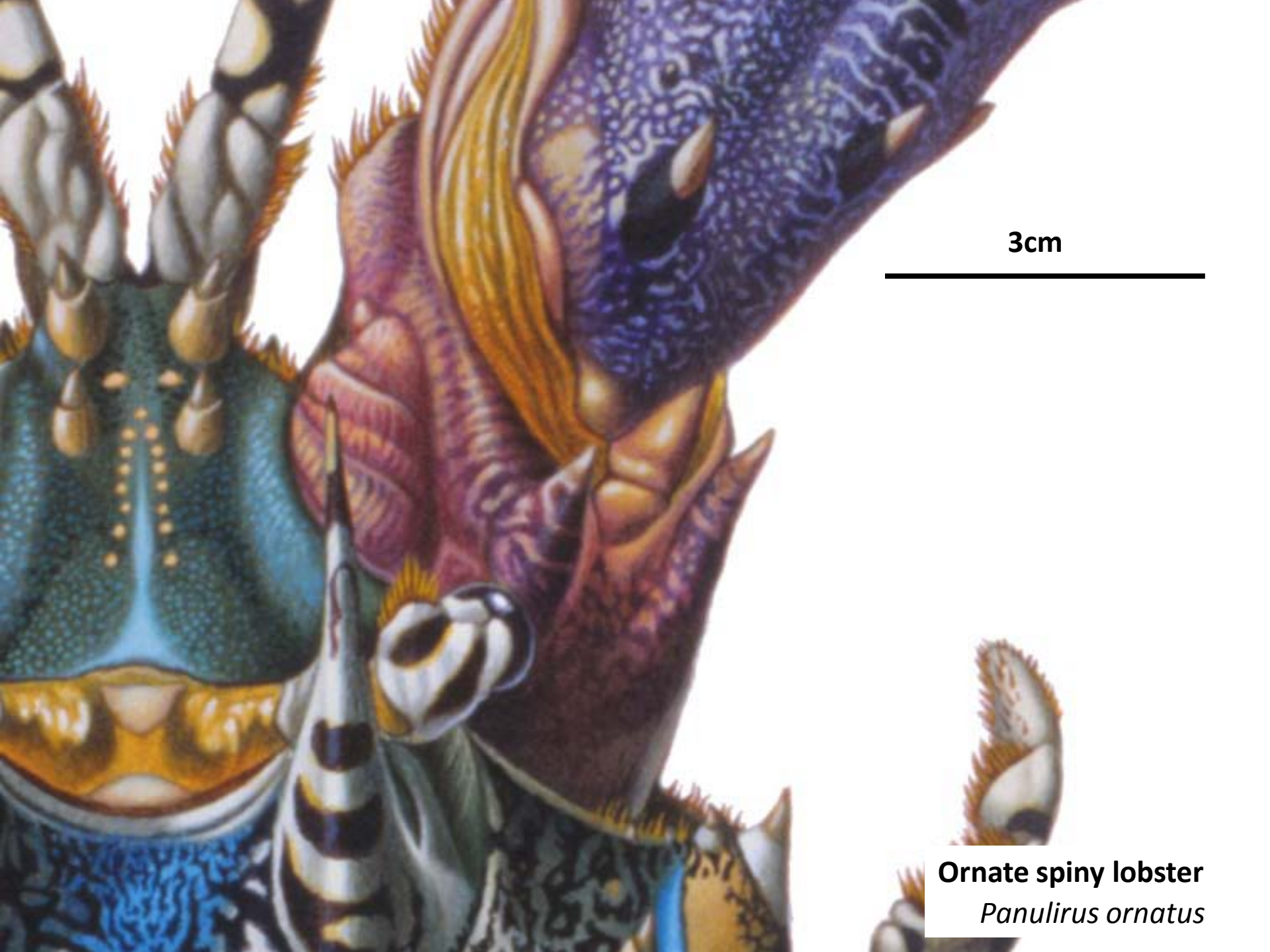
のせい
みよう



Displaying methods 1

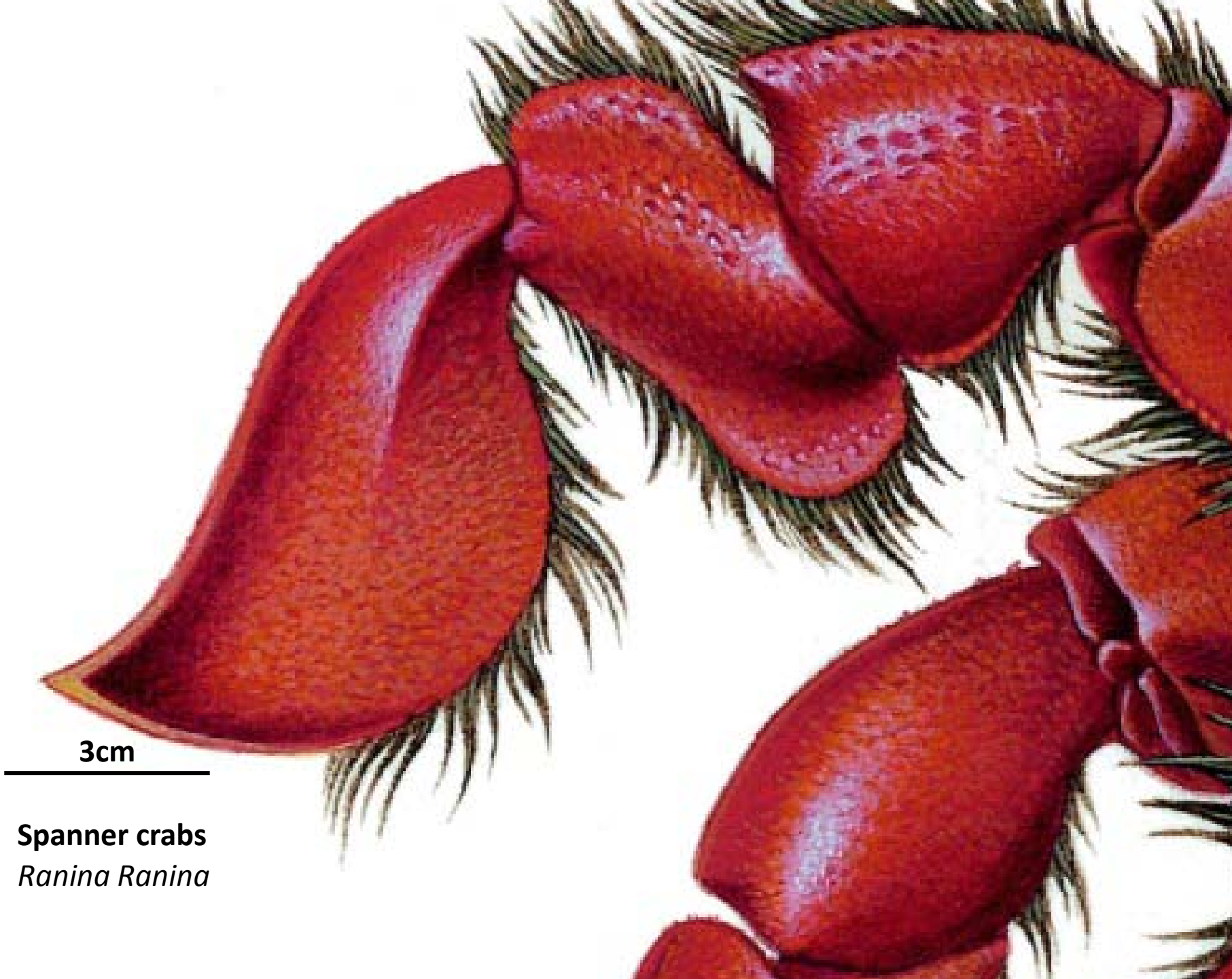
- a Magnifying glass
 - Observe Intricate details closely





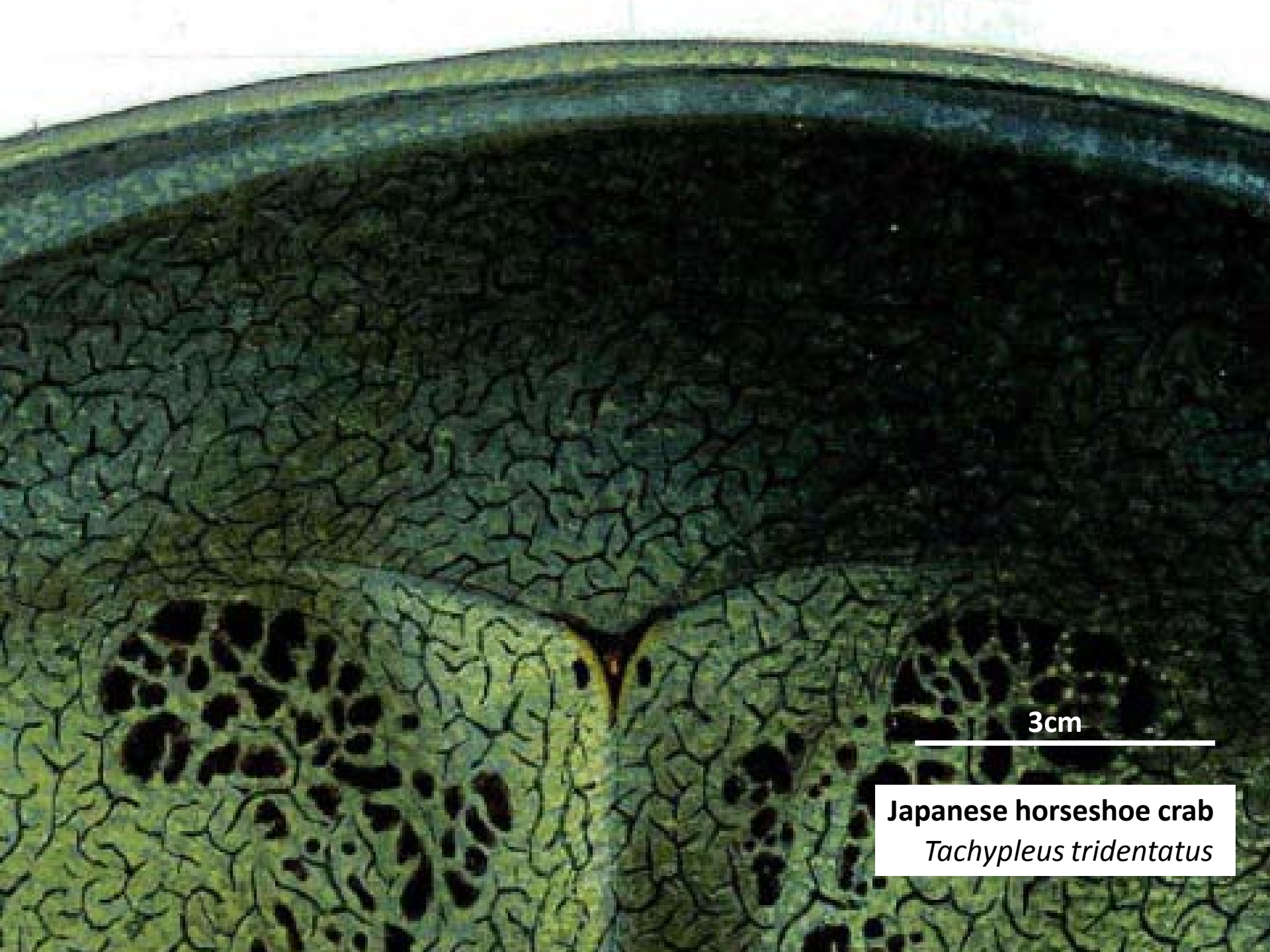
3cm

Ornate spiny lobster
Panulirus ornatus



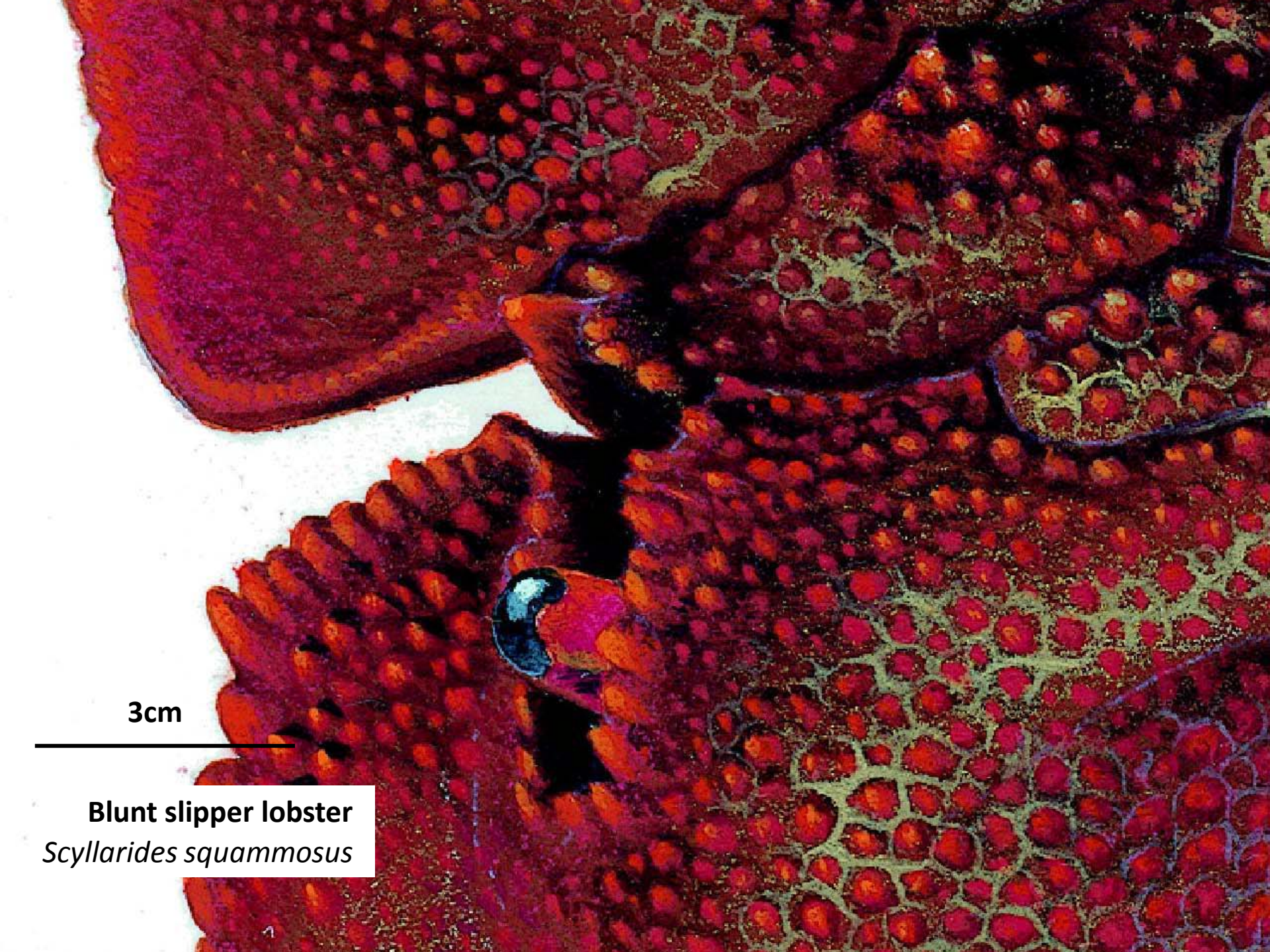
3cm

Spanner crabs
Ranina Ranina



3cm

Japanese horseshoe crab
Tachypleus tridentatus



3cm

Blunt slipper lobster
Scyllarides squammosus

Displaying methods 2-1

- Give a biological explanation
 - Understand the characters, their function and the connection of life styles



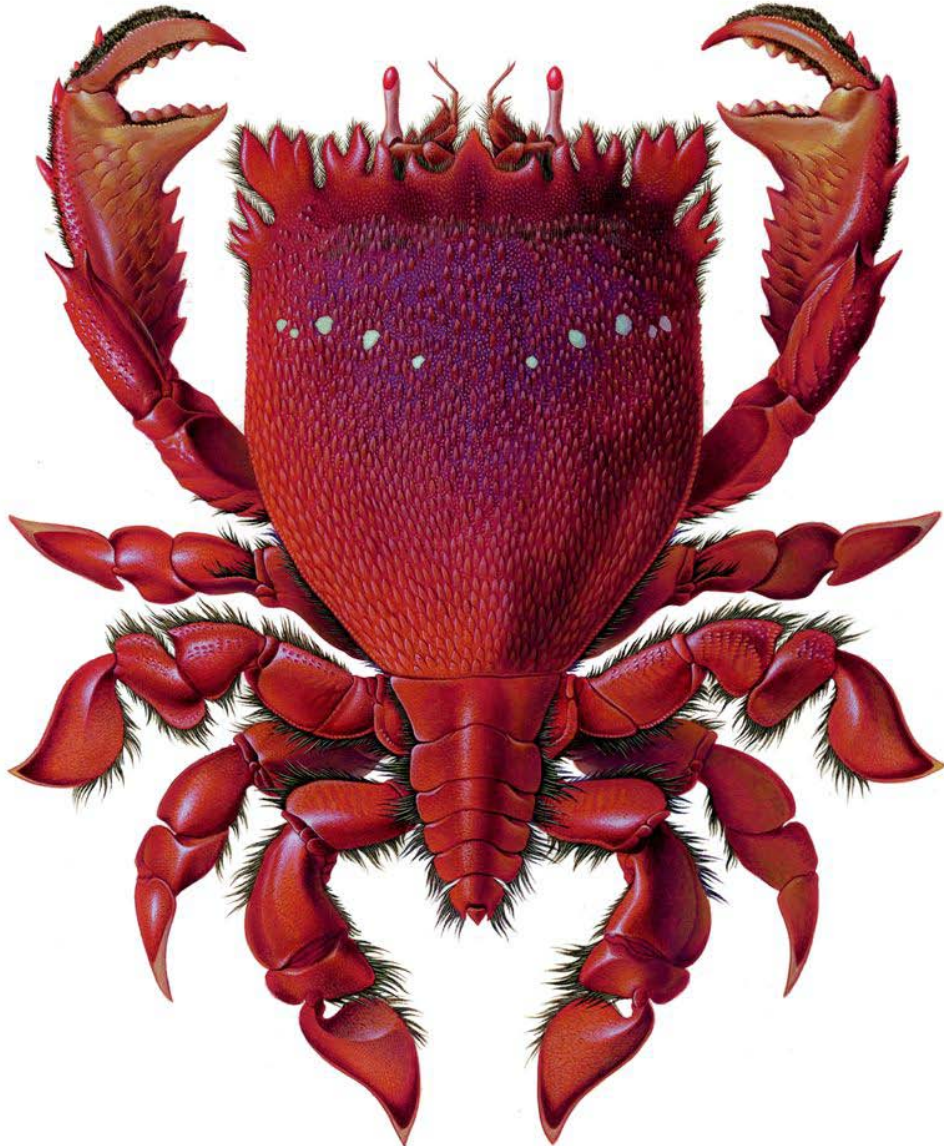
American lobster

(*Homarus americanus*) NEPHROPIAE

Check out their claws!

American lobsters have two big claws. The right-hand claw called “pincers”, are utilised to tear and hold. The thick and powerful left-hand claw called “crushers”, are utilised to crack. If they grew up in the tank without gravel or sands, both of two claws would be pincers.

Displaying methods 2-2



Spanner crabs

(*Ranina Ranina*) RANINIDAE

I am a good sand diver.

Look at the legs of this crab. The end of their legs are flat. Spanner crab is usually buried in sand, and this shape of the legs are useful to dig sands. When they hide in the sands, they make strokes with legs and move backward.

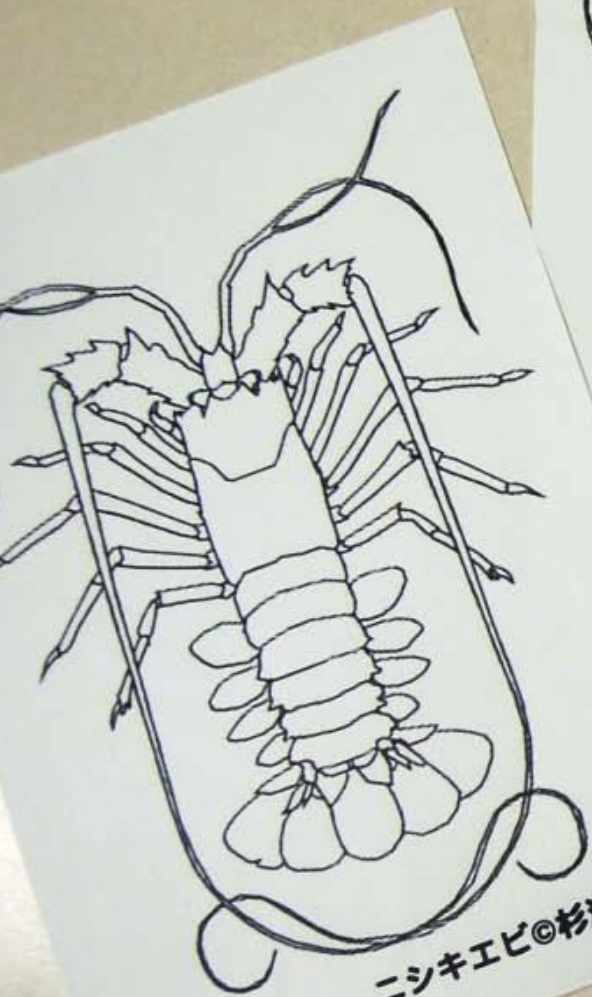
As just described, the shape of crabs vary depend on their life styles. Please compare with different species.

Displaying methods 3

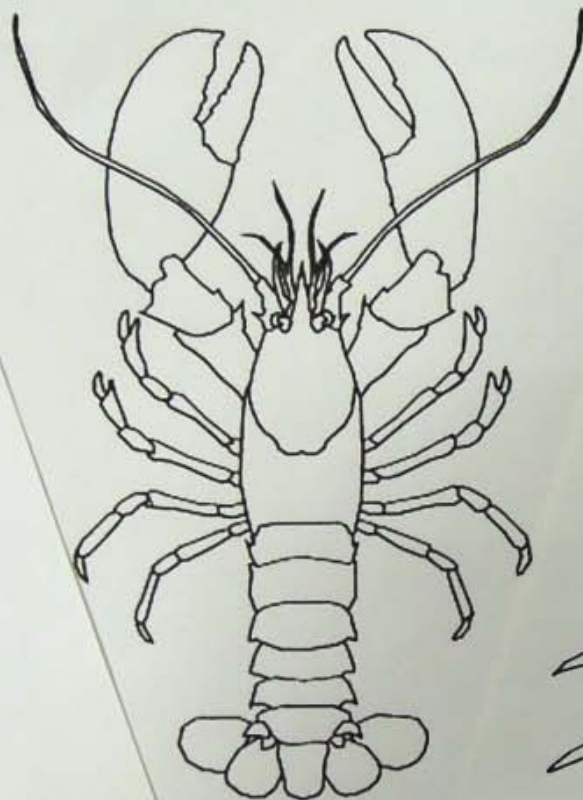
- Kids Zone
 - Observe crustacean's body forms, and have interests in their life



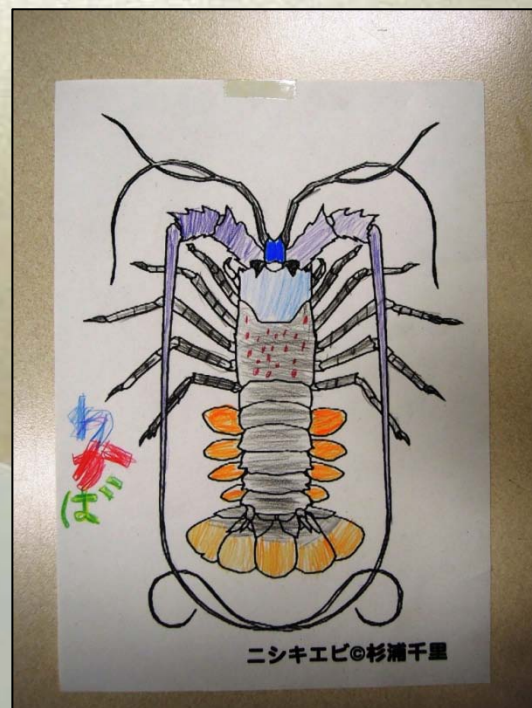
Coloring sheets



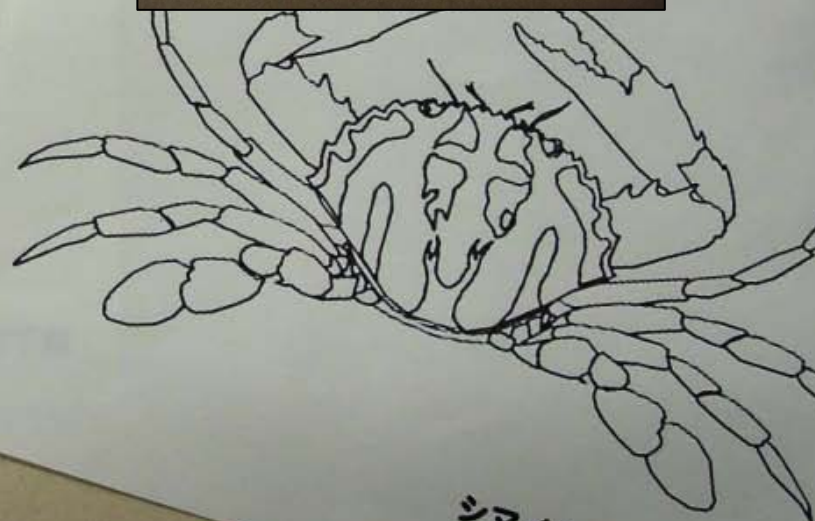
ニシキエビ©杉浦千里



カリカンロブスター



ニシキエビ©杉浦千里



シマイシガニ©杉浦千里





問題
二のあし
(をふくむ)は
何本?

のあしを
くみてみよう!

問題
つぎのカニの
あしの形は
何のため?

問題
つぎのカニの
あしの形は
何のため?

問題
つぎのカニの
あしの形は
何のため?

A
1
8本

1
2
3
4

1
2
3
4

1
2
3
4



Reviewing visitors' voice

- Impressed by the details of the paintings
 - “Looks like Photos!”, “Never imagined how beauty shrimps and crabs really are.”, “How minute they are!”



At least, they noticed the details of crustaceans' body form. They might have interests in the connection between biological characters and life styles of the crustaceans.



Reviewing kids' voice

- Less attention to the paintings
- Looked at shed shells intently and do colorings by imitating Sugiura's paintings



At least, they were aware that crustaceans have variation forms and colors.



Was the purpose achieved?

- We think that visitors had interests in biological aspects of crustaceans in his amazing paintings as a starter.
- By adding the scientific information, potential values of Sugiura's paintings were enhanced.



An art exhibition at the aquarium

